



# SUPPLEMENTAL REGULATIONS

NOVEMBER 1<sup>ST</sup> & 2<sup>ND</sup> 2013

FOR MORE INFORMATION OR TO REGISTER AS A VOLUNTEER HEAD TO

[ROCKYMOUNTAINRALLY.COM](http://ROCKYMOUNTAINRALLY.COM)

**CRC**

Canadian Rally Championship

Championnat des Rallyes Canadiens

**YOKOHAMA**  **SUBARU**

**VEX PERFORMANCE**

  
**COPPER POINT RESORT**

**columbia valley** TOURISM  
WHERE THE ADVENTURE BEGINS

**RALLYSPORT.CA**  
Race and Rally Equipment



## **Invermere & Columbia Valley, British Columbia**

**1<sup>st</sup>/2<sup>nd</sup> November 2013**

Welcome to the Rocky Mountain Rally organised by Calgary Sports Car club. As in previous years the rally is a qualifying round of the CARS National Rally Championship, the North American Rally Cup and the RallyWest Regional Championship.

2013 also sees the 40<sup>th</sup> anniversary of the running of the Rocky Mountain Rally and to celebrate this milestone the organisers decided to relocate the rally to Invermere and the Columbia Valley in British Columbia.

In addition to the change in host location, we also decided that a change to the usual date would help avoid the weather systems that have affected the Rocky Mountain rallies in recent years plus give the event the chance to provide new stages for all to enjoy.

The organising team have also been busy working with the Columbia Valley and local businesses to provide competitors a new and fresh looking Rocky Mountain Rally. At a media weekend, hosted by the Chamber of Commerce in May, the team was introduced to everyone attending, with a statement highlighting their commitment to building a long term relationship with the rally.

Both organisers and Columbia Valley are very excited by the prospect of the new host location and stages.

Entries will be processed strictly on a ~~First Come~~ . First Served+basis. Only those entries, received by October 30<sup>th</sup>, 2013, with the correct entry fee will be processed. Acknowledgements with status of entry will be sent out following confirmation of entry fee monies being received by Calgary Sports Car Club. So we would emphasize again the importance of getting our entry in sooner rather than later.

As always we welcome competitors from all corners of Canada and the United States. We very much look forward to seeing many familiar faces and welcoming new ones to the Columbia Valley in November.

### ***The Organisers***

<b>INDEX</b>	<b>Page #</b>	<b>INDEX</b>	<b>Page #</b>
Art. 1 - Announcement	3	Art. 15 . Judge of Fact and Driving Standards	11
Art. 2 . Status	3	Art. 16 . Service and Fuel	11
Art. 3 - Jurisdiction	3	Art. 17 . Entries and Entry Fee	12
Art. 4 . Type	3	Art. 18 . Seeding	14
Art. 5 . Schedule	3	Art. 19 . Results and Final Checks	14
Art. 6 . Officials and Identification	5	Art. 20 . Protests and Appeals	14
Art. 7 . Venues	6	Art. 21 . Awards	14
Art. 8 . Eligibility and Classes	8	Art. 22 . Insurance	15
Art. 9 . Vehicle Identification and Advertising	8	Art. 23 . Reward-a-Marshal	15
Art. 10 . Route	8	Art. 24 . Additional Information	15
Art. 11 . Timing and Scoring	9	Acknowledgements	16
Art. 12 . Technical Inspection	10	Appendices	
Art. 13 . Damage Declaration	10	Appendix <del>A</del> <sup>A+</sup> . Registration Form	17
Art. 14 . Reconnaissance	10	Appendix <del>B</del> <sup>B+</sup> . Registration and Technical Inspection Self-Declaration	21



## SUPPLEMENTARY REGULATIONS

These Supplementary Regulations incorporate the Standard Regulations for events in the CARS Rally Championship.

### Art. 1 – Announcement

1.1 Calgary Sports Car Club (CSCC) will promote 2 performance rallies on **Friday the 1<sup>st</sup> and Saturday the 2<sup>nd</sup>, of November 2013**. The events will be known as **The Rocky Mountain National Rally** and **The Rocky Mountain Regional Rally**. The events will be qualifying rounds of the following championships.

- **National Rally: The Rocky Mountain National Rally**, round five of the Canadian Rally Championship and round 12 of the North American Rally Cup.
- **WCRC Regional Rally: The Rocky Mountain Rally**, round three of the Western Canada Rally Championship.

### Art. 2 - Status

2.1 The events are sanctioned by ASN Canada FIA and the Canadian Association of Rallysport (CARS) and is part of the following championships

- Canadian Rally Championship
- North American Rally Cup
- Western Canadian Rally Championship

### Art. 3 - Jurisdiction

3.1 The event will be held under the Rally General Competition Rules of the Canadian Association of Rallysport (CARS), including;

- CARS Rally Regulations 2013, including the following CARS Bulletins
  - No 2013-02, dated January 21, 2013
  - No 2013-08, dated April 21, 2013
  - No 2013-11, dated July 11, 2013
- Western Canada Rally Championship Series Regulations,

3.2 These publications are available from the Rally West Region Director, Eric Grochowski (rallywest@carsrally.ca) at 199 Galbraith Drive SW, Calgary, Alberta, T3E 4Z8, or (403) 277-2710. They will be available for scrutiny at the start of the event at registration. They are also available for download at [www.CARSRally.ca](http://www.CARSRally.ca) and [www.RallyWest.com](http://www.RallyWest.com)

### Art. 4 - Type

4.1 The event is a performance rally consisting of special stages and transits. Stage road surfaces include dirt, gravel and rock

- **National** The total length of the event will be approximately 660 km with approximately 35% or 230 km of special stages, which will be held over 14 stages.
- **Regional** The total length of the event will be approximately 556 km with approximately 35% or 172 km of special stages, which will be held over 8 stages.

4.2 There may be snow and ice. The rally runs in an area with variations in altitude: The stages range from approximately 1100 m to 1700 m above sea level.

4.3 Due to the time of year and the times, of running some of the stages on Leg 1, it is recommended that competitors fit auxiliary lights to their vehicles.

### Art. 5 - Schedule

The schedule of the event will be:

<b>September 01, 2103</b>	Early Entries Open
<b>October 18, 2013</b>	Early Entries Close
<b>October 22, 2013</b>	Seeded Draw



<b>October 22, 2013</b>		Detailed Event and Reconnaissance time schedule released and sent by email to registered competitors.
<b>October 31, 2013</b>	07:30 . 09:00	Recce Registration . Copper Point
<b>Thursday</b>	09:00 . 12:00	Recce Leg 1 Friday Stages
	13:30 . 16:00	Recce Leg 2 Saturday Stages
	17:00 . 19:00	Test Stage/VIP Rides . Fairmont Hot Springs
	19:30	Seed One Drivers Start Order Draw . Copper Point
	20:00	Entries Close
	19:30 . 20:30	Radio Operators Meeting . Copper Point
	20:30 . 21:30	Rally Volunteer Meeting . Copper Point
	21:45	Stewards Meeting 1 . Copper Point
	22:00	Publication of Leg 1 Start Times
		National and Regional Copper Point
<b>November 01, 2013</b>	07:00 . 08:30:00	Registration and Technical Inspection . Columbia Valley Chamber of Commerce
<b>Friday</b>	08:00 . 09:00	Introduction of Officials . Copper Point Golf Course
	09:30 . 10:00	Novice Driver Meeting . Copper Point Golf Course
	10:30 . 11:30	Parc Exposé . Invermere Town Center
	11:30	Start Leg 1- National and Regional
	11:40	Parc Fermé - Regional
	15:46	Service 1
	16:36	Leg 1 Continues . National & Regional
	21:02	Service 3
	21:22	Leg 1 Continues . National & Regional
	21.50	End of Leg 1
	22:15	Stewards Meeting 2 . Copper Point
<b>November 02, 2013</b>	07:30	Stewards Meeting 3 . Copper Point
<b>Saturday</b>	08:00	Publication of Leg 2 Start Times
		National and Regional . Copper Point
	10:00	Start Leg 2 . National
	10:00	Parc Fermé . Regional
	12:21	Service 3
	12:29	Leg 2 Continues . National & Regional
	15:42	End of Leg 2 . Finish of Rally National and Regional
	16:45	Podium Ceremonies

17:30	Posting of Event Results
18:30	Stewards Meeting 4 . Copper Point
19:00	Competitors and Volunteers Banquet/ Awards Ceremony

### **Art. 6 – Officials and Identification**

**6.1** Listed below are the named officials for the event. Any changes to this will be issued via a Competitor Bulletin which will also be posted on the official notice board.

<b>Stewards</b>	Senior Steward . Tom Burgess Steward . Josh Keatley Steward . Jorge Dascollas
<b>Chair</b>	John Blaber 189 Lochend Drive, Cochrane, AB, T4C 2H2. T: (403) 671-1985 e-mail: <a href="mailto:chair@rockymoutianrally.com">chair@rockymoutianrally.com</a>
<b>Clerk of Course</b>	Peter Hill 1810 Summerfield Blvd, Airdrie, AB, T4B 1T9. T: (403) 912-0347 e-mail:
<b>Deputy Clerk of Course/Safety Officer</b>	Martin Loveridge 174 Thames St. S, Ingersoll, ON, N5C 2TS T: (519) 421-6853 e-mail: <a href="mailto:martin.loveridge@gmail.com">martin.loveridge@gmail.com</a>
<b>Registrar</b>	Juanita Hiemstra 189 Lochend Drive, Cochrane, AB, T4C 2H2. T: (403) 390-1985 e-mail: <a href="mailto:registrar@rockymountainrally.com">registrar@rockymountainrally.com</a>
<b>Volunteer Coordinators</b>	Myron Wintonyk (Chief Marshal) 27 Crestridge Heights SW, Calgary AB, T3B 0L3. T: (403) 210-7588 e-mail: <a href="mailto:volunteers@csc.ca">volunteers@csc.ca</a> Tony Penney 5950 38 Street Close, Red Deer, AB, T4N 0X8. T: (403) 505-3890 e-mail: <a href="mailto:volunteers@csc.ca">volunteers@csc.ca</a>
<b>Chief Scrutineer</b>	Mike Dyer T: (403) 993-2645 e-mail: <a href="mailto:m_ddyer@telusplanet.net">m_ddyer@telusplanet.net</a>
<b>Timekeeper</b>	Kurt Schantz
<b>Scoring</b>	Paul Westwick

<b>Event Communications</b>	Calgary Amateur Radio Association
<b>Pre-Event Competitor Relations</b>	TBA
<b>Pre-Event Competitor Relations (Francais)</b>	Eric Grochowski
<b>Media Liaison</b>	Shawn Bishop
	T: (403) 701-7259
	e-mail: <a href="mailto:media@rockymountainrally.com">media@rockymountainrally.com</a>

**NB: Please do not call the Organizers after 21:00 (Mountain Time)**

**6.2** All named event officials will be identified by coloured vests and tags with their names and position clearly identified.

<b>Named Officials</b>	Green Vest
<b>Marshalls and Safety Marshalls</b>	Orange Vest

**6.3** Event Stewards will be wearing red collared shirts with CARS Identification plus tag with their name and position identified.

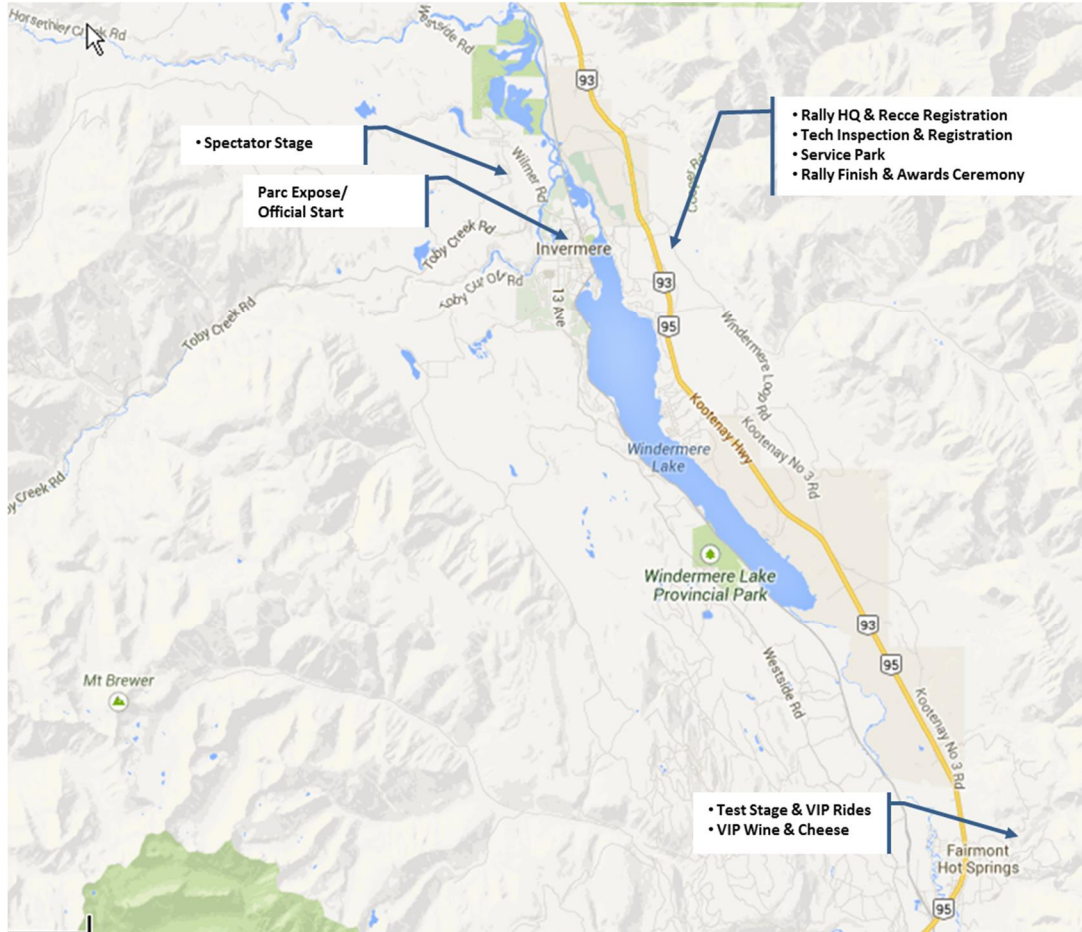
### **Art. 7 – Venues**

**7.1** Venue details and overview maps are provided below for information.

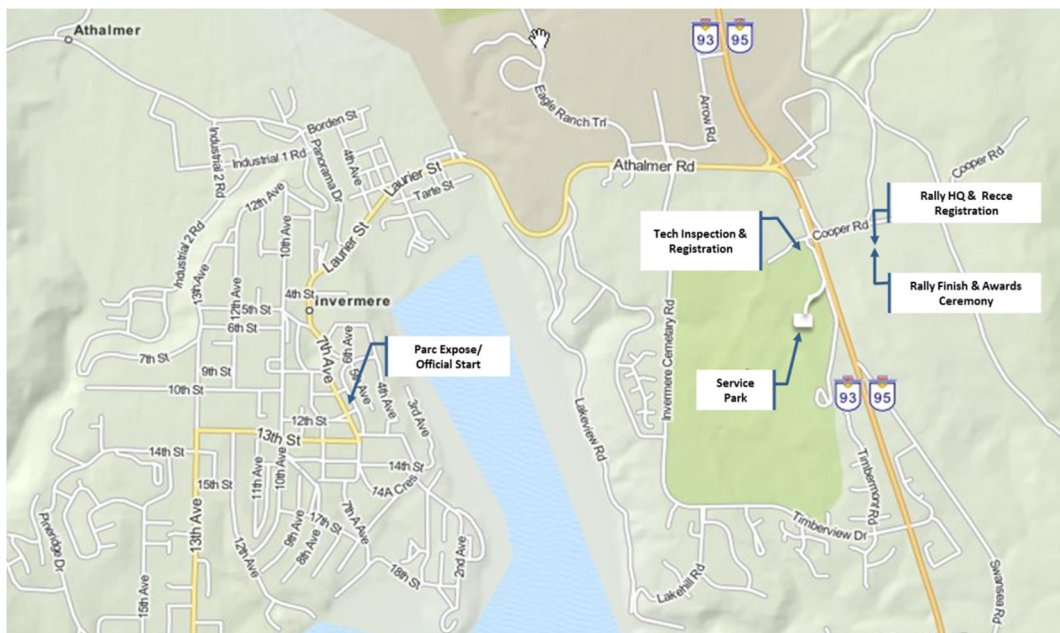
<b>Rally Headquarters &amp; Recce Registration</b>	Copper Point Resort 760 Copper Road, Invermere, BC, V0A 1K2
<b>Technical Inspection &amp; Registration</b>	Columbia Valley Chamber of Commerce Kootenay Hwy, Invermere, BC V0A 1K0
<b>Seed One Start Order Draw</b>	Copper Point Resort
<b>Introduction of Officials</b>	Copper Point Resort
<b>Novice Drivers Meeting</b>	Copper Point Resort
<b>Service Park</b>	Copper Point Golf Club
<b>Parc Exposé /Official Start</b>	12th Street, Invermere, BC
<b>Test Stage/VIP Rides</b>	Fairmont Hot Springs Resort 5225 Fairmont Resort Rd Fairmont Hot Springs, BC V0B 1L1
<b>Spectator Stage</b>	Toby Hills Road
<b>Rally Finish and Awards Presentation</b>	Copper Point Resort



## Venues - High Level Overview



## Venues – Detailed Invermere Locations



## **Art. 8 – Eligibility and Classes**

**8.1** All CARS vehicles must comply with the 2013 CARS General Competition Rules and National Rally Regulations

**8.2** The class structure for the event will be

- Open 4WD
- Open 2WD
- Production 4WD
- Production 2WD
- Group Five (5)

**8.3** Vehicles registered in the United States of America where the driver is competing on CARS entry permit (NRR 11.1.10) shall be acceptable to compete, provided that they meet the requirements of current RA/NASA Rally Regulations. Entrants whose vehicles are entered under this provision must be able to produce, upon request by CARS or event officials, a copy of the relevant Rally Regulations. Failure to produce these regulations may result in the vehicle being judged according to CARS regulations.

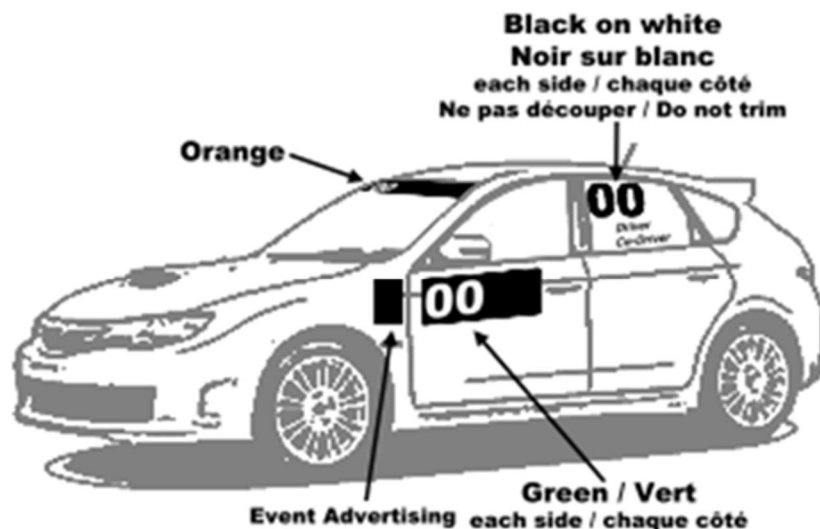
**8.4** US vehicles entered in Canadian Rallies shall be classified by CARS vehicle class regulations.

## **Art. 9 – Vehicle Identification and Advertising**

**9.1** Competitors are required to make space on all competing vehicles as outlined in NRR 12.4.1.8 and 12.4.1.9, which will be used by the sanctioning body. (See diagram below for clarity)

**9.2** The event will provide a panel 25cm high and approximately 10 wide and requests that all competitors place this immediately on both sides of the vehicle, ahead of and in line with the CARS reserved space.

**9.3** Competition and Recce numbers will be supplied in the registration packages. The Recce numbers **MUST** be installed on the upper right side of the windshield and must be kept clean at all times during recce.



## **Art. 10 – Route**

**10.1** Entrants will be supplied with Route Instructions and details of the special stages at Recce Registration. These documents will provide all the information necessary to traverse the course.

**10.2** Time cards will be issued at Main Time Control 1, Friday 01November, 2013. (Official Start . 12<sup>th</sup> Street Invermere)

**10.3** All stages will be set up and organised in the following format during the event.

- **Stage Time Control (STC)**
  - Competitors should arrive at their due time as indicated in Official Bulletins and/or Time Cards.
  - The marshal shall enter the provisional starts time on the competitor's time card.
- **Stage Start Line (SSL)**
  - At the Stage Start Line the marshal will enter the actual start time, which will normally correspond with the provisional start time in hours and minutes, and seconds.
  - Once a Competitor has clocked in at an STC, the Start Marshal will assume that they are ready to start the Stage and will issue a Start Time as soon as the Start Line is clear, whether the Competitor is ready or not.
  - All control zones are Parc Fermé zones (from the yellow board to the end of control board)The start will be signalled by traffic lights which will go from RED (15 seconds to go) through AMBER (5, 4, 3, 2, 1 seconds to go) finally to GREEN at the start time. Electronic beams will be used to determine a Jump Start.
  - In the event of equipment failure, the start procedure will revert to a manual system.
- **Stop Control (SC)**
  - A competitor will receive his Stage Finish Time in hours, minutes, seconds and tenths of a second at the Stop Control.
  - Any Competitor who fails to stop at the Stop Control must return on foot; reversing the car in a control zone is prohibited and subject to the Penalty of 10 minutes (NRR 17.3)
  - A photo beam finish will be utilised on the Flying Finish Line, recording times to a tenth of a second. Times will be entered on Competitor's Time Cards at the Stop Control.
  - In the event of equipment failure, times will be established by means of back-up clocks.

**Art. 11 – Timing and Scoring**

**11.1** Timing, Scoring and Controls will in accordance with NRR15 (Timing & Scoring) and NRR16 (Controls).

**11.2** Competitors will use the lateness time to calculate the time out at the end of the stage, unless the time spent in the stage is longer. If it is longer, the competitor must use the time at the stage finish in hours and minutes. All times given are elapsed times.

	<b>Car A</b>	<b>Car B</b>	<b>Car C</b>
Time In	13h 05m	13h 05m	13h 05m
Stage Start	13h 07m	13h 07m	13h 07m
Stage Finish Time	13h 11m 23s	13h 14m 56s	13h 16m 14s
Lateness Time	(7)	(7)	(7)
Stage Out Time	13h 14m	13h 14m	13h 16m
Transit Time	10	10	10
Time In	13h 24m	13h 24m	13h 26m

**11.4** All cars must be ready to attempt the stages at their due time as each stage opens. Gaps in the entry may be closed up.

**11.5** Stage Finish timing will be done to the previous 1/10 of a second using photo-cell beam and electronic clocks.



## **Art. 12 – Technical Inspection**

**12.1** Technical Inspection (Scrutineering) will be performed at the Columbia Valley Chamber of Commerce. The exact location will be provided in a forthcoming bulletin along with assigned times for competitors to attend.

**12.2** At Scrutineering cars will be examined for compliance with NRR 12, Eligibility of Vehicles and Equipment, as well as for class eligibility. **Attention is drawn to NRR 12.5 – 12.8.** Each Entrant and driver will be assumed to have full knowledge of the vehicle and its eligibility for the class entered. Vehicles must be presented in the same condition as they intend to compete (including auxiliary lights).

**12.3** All competing vehicles must be registered and insured for use on the public highway. **12.4** A valid vehicle Log Book NRR 12.9 must be made available at Scrutineering. Failure to produce this document will incur a penalty of \$25.00 as per NRR 12.9.11

**12.5** All vehicles must carry fire extinguishing systems as per NRR 12.3.4

**12.6** All vehicles are required to carry spill kits as per NRR 12.3.24. Spill kits meeting Rally America Standards are acceptable for American Competitors.

**12.7** All vehicles must carry a comprehensive first aid kit conforming to NRR 12.3.5, and shall be carried in the passenger compartment.

**12.8** All vehicles shall have fitted and the Driver and Co-Driver shall use safety harnesses, which conform to NRR 12.3.3.

**12.9** Safety Helmets and Frontal Head Restraint (FHR) equipment, will be examined and must conform to current regulations NRR 11.1.6 and 11.1.7, and must be worn on the Special Stages **12.10** Drivers and Co-Drivers are reminded that they must wear flame resistant overalls on all Performance Rallies and must conform to current regulations NRR 11.1.8

**12.11** At the discretion of the Scrutineer and the Clerk of the Course certain competitors vehicles will be selected for Post Event Scrutiny. Failure to present the vehicle at the nominated place and time designated may be deemed a breach and may result in **EXCLUSION**.

**12.12** There are no restrictions on tires used on the event with the exception of NRR 12.4.3, which prohibits the use of studded tires with the following exception

At regional events, taking place in a province which permits studded tires for street use, the CARS region which sanctions the event may allow the use of street-legal studded tires. For dual status events, competitors entering the national portion are still not permitted to use studded tires, even if they are also entered in the regional portion. (British Columbia allows the use of street-legal studded tires).

Details of the type of street-legal stud permitted can be found at the following link:  
<http://www.bchighway.com/regulations/studded-tires.html>

## **Art. 13 – Damage Declaration**

**13.1** Competitors will be required to complete and sign the Damage Declaration Form stating that they have or have not been involved in any incident resulting in damage to private property or injury to persons or animals. Alternatively they should provide details of any such incident where damage or injury has occurred.

**13.2** Competitors who do not report to the Final Time Control are required to forward the report to the Registrar within 72 hours of the finish of the event. However if they have been involved in an incident which involves injury or 3<sup>rd</sup> person damage, the form **MUST** be given to the organisers on the same day of the incident.

13.4.3 The Damage Declaration will form part to the Competitors timecard book.

## **Art. 14 – Reconnaissance**

**14.1** Two (2) pass Reconnaissance (recce) will be available for all, to add more precision to the standard Routebook, but it is recce not mandatory. When a stage is run in reverse crews will encounter traffic in both directions.

**14.1.1** A time schedule will be issued for recce at registration. **It must be noted that recce is expressly prohibited outside the designated times.**

**14.1.2** The maximum speed for recce on the stages is 60kph or the posted legal limit, whichever is the **lower** speed.

**14.1.3** Use of radar detection equipment during recce is prohibited.

**14.1.4** The use of stage rally prepared cars on recce is **prohibited**.

**14.1.5** Recce numbers must be correctly installed on all recce vehicles. Competitors will be provided with their recce cards after proper placement has been confirmed by an event official.

**14.1.6** Only one vehicle per (entry) is permitted for recce. Competitors are allowed to double up in one car if they wish although this it is not recommended.

**14.2** Failure to comply with the regulations governing recce will result in penalties being applied. These are set out below.

**14.2.1** Breach of Recce Regulation 14.1.1 above or practicing as per the CARS (NRR 17.9) could result in **exclusion** from the event

**14.2.2** Breach of 14.1.5 will be treated as a breach of 9.1. If a competitor is reported to the organizers for such a breach, it will be passed to the event stewards for their deliberation.

**14.2.3** Breach of Route Familiarization Regulation 14.1.2. Maximum Speeds will be penalized as follows:

- First infraction: \$150.00
- Second infraction: \$300.00 plus the first \$150.00
- Third infraction: Exclusion from the rally plus the \$450 in fines already accrued and forfeiture of all entry fees.

**14.2.4** Use of radar detection equipment: first occurrence - exclusion from further recce.

**14.2.5** The organizers reserve the right to place radar on any designated road used in the rally either as stage roads or connecting the roads to be used as stages.

#### **Art. 15 – Judge of Fact and Driving Standards**

**15.1** Named Judges of Fact will appointed be by the Organisers, in accordance with GCR 6.1.1 and GCR 6.1.2. They will be on duty throughout the event to observe and report any Competitor who is considered to be in contravention of the rules and penalties, as outlined in NRR 17.2 and 17.3, as well as any violation of Parc Fermé regulations.

**15.2** Competitors and his/her Service Crew are required to drive in a courteous and respectful manner throughout the event. Any notified offense which involves speeding, reckless driving or failing to observe road signs, will be dealt with as outlined in NRR 17.2 and NRR 17.3

**15.3** If a Service Crew is servicing for more than one competitor, and notification is provided of an offence as outlined in 15.2 above, each competitor will be penalized.

**15.4** Any cases reported to the Organisers by the Police for speeding, reckless driving or failing to observe road signs, will be dealt with as outlined in NRR 17.2 and NRR 17.3.

**15.5** The event will have radar, manned by event officials, RCMP or both.

**15.6** Any ~~stunting~~ on private land or forestry land is a serious violation and an Improper Procedure Infraction (NRR 17.3), penalty of 10 minutes will be assessed to any competitor who is observed carrying out this particular violation. In addition, the stewards will be asked to assess fines to cover the costs of repair.

#### **Art. 16 – Service and Fuel**

**16.1** The Service Park will be located at the Copper Point Golf Club for the entire event, and competitors will be assigned a specific area to service from. These will only be assigned upon receipt of a paid entry fee. Competitors are also asked to provide details to the registrar of the size of service vehicle that they will be using. This will ensure that sufficient space is provided for each team.

**16.2** Competitors should ensure that any tents or other structures are secured and prepared for possible windy conditions. The surface of the service park is paved and as such **NO** drilling into the surface to secure tents or other structures will be allowed.

**16.3** To protect the environment, competing vehicles are required to service on tarps or a non-porous ground sheet. Fuel containers must be on tarps. Tarps as well as the use of supplied absorbent pads shall be placed to avoid any gasoline spillage onto the ground during refueling. Crews are required to carry absorbent materials sufficient to soak up any fuel or liquid spill during service maintenance or repair. Used absorbent materials must be removed and disposed in a proper Hazardous Material site.

**16.4** Fire service is not present in the Service Parks. **Service crews must carry at least one fire extinguisher with a minimum UL rating of 10BC to all refuelling zones.** This is in addition to the fire extinguisher on board the competition vehicle. (NRR 18.1.9)

**16.5 Each service crew shall have at least one fire extinguisher with a minimum UL rating of 40BC or 2 of 20BC in their service area.** It must be easily accessible and visible. (NRR 18.1.9) If a crew is servicing for more than one car, there must be one 40BC fire extinguisher for each competing car.

**16.6** Service Vehicles and Competing vehicles must remain on roadways or designated trails into and out of the service park, as well as in the service park. Driving in other areas is prohibited and is a serious violation.

**16.7** All belongings and refuse shall be removed from the Service Park upon departure.

All competitors will be expected to participate in recycling opportunities provided throughout the event, such as the use of supplied clear plastic bags for the collection of recyclable materials.

**16.8** Food and refreshments will be available at the Service Park. All Competitors and Service Crew are reminded of CARS GCR 5.11 and GCR 5.12 prohibiting the consumption of drugs and alcohol during an event.

**16.9** Competitors are responsible for sourcing their own fuel for competition and support vehicles. No fuel is available at the Service Park. The nearest available fuel is at the Petro Canada which is located on Laurier Street. This is the main approach road into Invermere town center.

**16.10** In addition to the refuel zone after service, there will be two remote fuel stops during Friday stages which will comply with NRR 15.9 with the exception of 15.9.1. Allowable liquids used for ~~water~~ spray or ~~water~~ injection may also be added as needed. Only official vehicles, competition vehicles and properly marked service vehicles will be allowed in the remote fueling area.

- The approximate distance to the first refuel will be approximately 107 Km of transit and 20 Km of stage.
- The approximate distance to the second refuel will be approximately 110 Km of transit and 20 Km of stage

**16.11** The organizers will provide a fuel shuttle for teams that will need fuel taken to the remote refueling area.

Fuel must be delivered to the organizers between 10:00 and 10:30 on Friday morning in the service park, in clearly marked jerry cans. There is only one fuel shuttle for the day so teams **MUST** send all fuel needed for the day at this time. Organizers are not responsible for errors in marking fuel containers or errors in content of fuel containers.

Space on the fuel shuttle must be requested through the event registrar at registration.

### **Art. 17 – Entries and Entry Fee**

**17.1** There will be a maximum of 50 entries accepted for this event. These will be accepted in order of receipt along with payment.

Entries for the Rocky Mountain National Rally will be accepted in all CARS Classes. (Open AWD, Open 2WD, Production AWD, Production 2WD and Group 5)

Entries for the Rocky Mountain Regional Rally will be accepted in all CARS WCRC classes (Open AWD, Open 2WD, Production AWD, Production 2WD and Group 5)



**17.2** Entries for the Rocky Mountain National Rally and Rocky Mountain Regional Rally will be accepted until 20:00 on Thursday October 31, 2013. These can be submitted to the registrar at the Rally HQ.

**17.3** Complete entry forms, including payment, should be sent to the event registrar below. Entry forms scanned and emailed will be accepted, however original copies **MUST** be presented at registration.

Entries are to be sent to:

**Rocky Mountain Rally Registrar (Juanita Hiemstra)**  
**189 Lochend Drive**  
**Cochrane, AB, T4C 2H2**

**Tel: (403) 390-1985**

**Email: [reigistrar@rockymountainrally.com](mailto:reigistrar@rockymountainrally.com)**

**The entry fee must accompany the completed entry form to be counted as an entrant.** Payment can be made by either cheque made payable to **Calgary Sports Car Club** or by email transfer to [reigistrar@rockymountainrally.com](mailto:reigistrar@rockymountainrally.com)

**17.4** The entry fees for the Rocky Mountain National and Regional Rallies are defined below.

	Discounted Entry Fee Received on or before Oct 14 CDN	Standard Entry Fee Received After Oct 14 CDN
National & WCRC Regional Rally	\$875.00	\$1,250.00
National Rally Only	\$850.00	\$1,200.00
WCRC Regional Rally Only	\$600.00	\$700.00

**17.5 All entries received on or before October 14, 2013, with entry fee, shall be assessed at the discounted entry fee. Entries and/or fees received after 01:00 MDT on October 14, 2013, will be assessed at the Standard Entry Fee.**

The entry fee includes:

- Entry to the Rally
- One set of route familiarisation notes/documents
- One Competitors Official Routebook
- One set of Service Crew Instructions and vehicle identification
- 4 Meal tickets to the Awards/Volunteer Recognition Dinner (**additional dinner tickets may be purchased at registration for \$30.00 CDN each**).
- CARS Event \$5 million General Liability coverage plus participant Accidental Death and Dismemberment coverage
- \$25.00 per car Rally West Timing Equipment Levy
- \$20.00 per car Rally West Regional Levy

**17.6** Entry refunds will be as defined in accordance with GCR 4.9 with refund rates as shown below. Competitors are required to notify the registrar in writing of their intention to withdraw their entry. Verbal notification will only be accepted if confirmed in writing.

Before 07:00 on October 24, 2013,	<b>No Penalty</b>
07:00, October 24, 2013, to 07:00 October 31 2013	<b>10% Penalty</b>
07:00 to 19:00 October 31, 2013	<b>30% Penalty</b>
After 19:00 October 31, 2013	<b>No Refund</b>

**17.7** Non-Canadian Residents who are not holders of a CARS competition license but who hold FIA International, Rally America (RA), National Auto Sport Association (NASA-RS) licences are invited to participate in the rally. These competitors must register with CARS and complete the CARS special entry permit form a copy of which can be obtained from the CARS web site; [www.carsrally.ca](http://www.carsrally.ca) under %downloads+

RA and NASA competitor and vehicle eligibility regulations will be recognised.

Foreign competitors should obtain personal medical insurance coverage for themselves and their team before entering Canada. Primary medical coverage is not part of the general liability/AD&D insurance package that CARS has in place.

#### **Art. 18 - Seeding**

**18.1** Competitors are reminded that the National Seed System will be used at National Championship events and will also apply to Competitors entered under the Rocky Mountain Regional Rally

**18.2** A seeded draw will take place on Tuesday 22 October 2013. This will determine the start order on Friday 1 November 2013.

**18.3** A further draw will take place for Seed One drivers to determine their start order. This will take place at the Rally HQ on Thursday 31 October 2013 at 7.00pm. Drivers must be present to participate in this draw. Failure to appear will result in a start order being allocated.

**18.4 No correspondence will be entered into regarding the seeding of the final entry list, once it is published.**

#### **Art. 19- Results and Final Checks**

**19.1** Interim results will be available during the rally and will be posted on the Official Notice Board, which will be located in the Service Park during each leg of the rally.

**19.2** Provisional results will be posted as soon as possible and will be posted on the Official Notice Board which will be located in the Rally HQ.

**19.3** All final checks on competition cars will be carried out in the Parc Fermé area unless otherwise directed by the Chief Scrutineer.

**19.4** Cars may not be removed from Parc Fermé until allowed to do so by the Stewards. Competitors are encouraged to familiarise themselves with the Parc Fermé rules NRR16.8

**19.5** Competitors shall ensure that they and their cars are available for inspection, should an inquiry be submitted in accordance with Article 20 of the Supplementary Regulations.

#### **Art. 20 – Inquiries Protest and Appeals**

**20.1** Competitors are advised to familiarize themselves with the GCRs regarding inquiries, protests and appeals.

**20.2** Inquiries must be lodged in accordance with GCR Clause 8.

**20.3** Protests must be lodged in accordance with GCR Clause 9.

**20.4** Appeals must be lodged in accordance with GCR Clause 10.

**20.5** Fees for protests and appeals are indicated are indicated in GCR 9.11 and 10.10. For clarity they are shown below.

<b>National Protest</b>	<b>\$250.00</b>
<b>Regional Protest</b>	<b>\$100.00</b>
<b>National Appeal</b>	<b>\$500.00</b>
<b>Regional Appeal</b>	<b>\$200.00</b>

#### **Art. 21 - Awards**

**21.1** The following awards will be presented at the Awards Ceremony for both.

- Canadian Rally Championship
- Western Canada Rally Championship

<b>First to Third Overall</b>	<b>Driver and Co-driver</b>
<b>First to Third Overall (2WD)</b>	<b>Driver and Co-driver</b>

<b>First in Class Production (4WD)</b>	<b>Driver and Co-driver</b>
<b>First in Class Production (2WD)</b>	<b>Driver and Co-driver</b>
<b>First in Class Group 5</b>	<b>Driver and Co-driver</b>
<b>Novice Award</b>	<b>Driver</b>

**21.2 Award winners must be present at the Awards Ceremony.** Non-appearance will result in forfeit of the relevant awards. (NRR 11.3.5)

**21.3 Additional Awards,** may be presented by the organisers. These will be notified by either a Competitor Bulletin or be posted on the Official Notice Board.

#### **Art. 22 - Insurance**

**22.1** The event carries \$5 Million general liability coverage as well as Participant injury insurance as provided through ASN Canada FIA. A summary of the coverage can be found at:

<http://www.asncanada.com>

#### **Art. 23 – Reward-a-Marshal**

**23.1** As many of you are aware, this event is organised and run purely by volunteers. This means we require people to give up their valuable time to stand out on the stages all day to ensure your safety. We would like to reward their dedication with a marshals raffle and therefore need your help! A small donation to the rally fund would be very much appreciated (a figure of \$20 per competing crew is suggested. We leave it up to you!!!). Also any promotional items you may wish to donate as raffle prizes would also be gratefully received. These can be given to the registrar at registration.

#### **Art. 24 – Additional Information**

**24.1 Parc Exposé** - All National and Regional competitors are required to be present, with their vehicles, at the Parc Exposé on the 12<sup>th</sup> Street, Invermere. Late arrival at the Parc Exposé will be penalized as provided for in NRR 16.8.2. This Parc Exposé will follow the same Parc Fermé regulations as outlined in 24.7, Turnaround Regroup Controls.

**24.2 Official Start** . The official start of the Rocky Mountain National Rally will be at the time control leaving the Parc Exposé on 12<sup>th</sup> Street, Invermere. After a brief introduction, competitors will start on their assigned time and will transit to the first stage of the rally.

**24.3 Finish Procedure** . The final Control will be located at the Copper Point Resort. After the final control of the event all cars will be directed to a Parc Fermé area and teams must leave that area as soon as possible. Vehicles that are potentially on the National or Regional podium may be held in a separate Parc Fermé /Staging area.

The podium presentations will be:

- National Overall
- National 2wd
- Regional Overall
- Regional 2wd

**24.4 Permitted early check-in** . Competitors will be allowed to check in early at all main time controls. These will be at:

- Entrance to the service park at the end of Day 1
- Final time control at the Finish

In addition Competitors may check in early to Parc Exposé and any regroup control that is in place between the two runs of a turn-around stage as 24.7 below.

**24.5 Reseeding** . There will be a re-seed of competitors after each service on Leg 1 and Leg 2. Competitors will also be reseeded immediately before the start of Leg 2 based on all Leg 1 stage times.

**24.6 Reseed and Regroup exiting Service** - There will be regroup controls at the exit of each service. Competitors will be expected to check out of service on their correct time and will be assigned their time



out of the regroup/reseed control. Vehicles are expected to continue to fueling and continue on the transit without being held or waiting for the correct out time. Arrival at the next control will be calculated from the provided out time of the regroup/reseed control.

**24.7 Turn-around Regroup Control** - Where a turn-around stage is used, competitors will have a generous transit time from the end of the inbound stage before they will be required to check into a regroup control. Competitors are reminded that regroup controls are treated as a parc fermé. For turn-around regroups, competitors will be allowed to stay with their vehicle. Opening doors, (excluding trunks and hoods) taking or replacing food, drink or clothing and checking or adjusting tire pressures will not be considered servicing. All other forms of servicing within the regroup control will be penalized according to the parc fermé rules (NRR 16.8 4).

The entrance to the regroup control will be a main time control and competitors may declare their arrival times.

Competitors may re-order themselves, with the agreement of all involved, within the regroup control by advising the regroup marshal before out times are assigned. Vehicles should be parked in the regroup in the order you want to leave the control. If you are letting someone move in front of you, leave room for them ahead of you when you park in the regroup control.

Out times from the regroup will be assigned. There will be a five-minute transit between the regroup out control and the stage arrival control. Competitors can also expect approximately five minutes notice before their due out-time from the regroup.

**24.8 Bus Stop Chicane** - Where a bus stop chicane is used for average speed reduction it is simply called a bus stop in the Route Book. The Bus Stop will be made from barricades similar to chicane barricades used in this event and will divert cars completely off the road and back onto the stage road. Going around the Bus Stop will be treated as short-cutting the course (NRR 17.2).

**24.9 Time of Day** . The event will run on Mountain Daylight Time, based on GPS time.

**24.10 Specific Regional Regulations (Fire Extinguishers)** - Rally West competitors are required to carry two fire extinguishers, each with a minimum 5BC rating.

**24.11 Local Sensitivity - The Rocky Mountain Rally is a “No Smoking” Rally.** Smoking is prohibited in all areas except inside personal vehicles. Cigarettes must be extinguished in vehicle ashtrays. Smoking materials thrown on the ground will be deemed a serious violation as per the NRRs.

### **Acknowledgements**

The Town of Invermere.

Columbia Valley.

Columbia Valley Chamber of Commerce.

Copper Point Resort.

Copper Point Golf Club.

Fairmont Hot Springs Resort.

BC Ministry of Transportation

BC Ministry of Forests, Land and Natural Resources



# Canadian Association of Rallysport

## Performance Rally Registration Form/Formulaire d'inscription du rallye

Name of Event/Nom de l'événement	Championship/Championnat National      Regional	( ) Rally Pacific Motorsports ( ) Rally West ( ) RallySport Ontario ( ) Rally Sport Québec ( ) Atlantic Region
Seed/ Classe	National class/Classe nationale – Regional class/ Classe régionale -	Expert      Novice Expert      Novice
<b><u>Entrant/Propriétaire</u></b>		
Name/Nom _____ Phone/Tél (____) - _____		
Address/Adresse _____ Prov./State _____		
City/Ville _____ Code _____		
<b><u>Driver/Pilote</u></b>		
Name/Nom _____ Phone/Tél (____) - _____		
Address/Adresse _____ Club _____		
City/Ville _____ Prov./State _____ Code _____		
Email _____		
Driver's licence no./ N° de permis de conduire _____ Prov./State _____		
Competition licence no./N° de licence de rallye _____ CARS – Nat Reg RA/NASA – Nat Reg FIA		
<b><u>Co-driver/Co-pilote</u></b>		
Name/Nom _____ Phone/Tél (____) - _____		
Address/Adresse _____ Club _____		
City/Ville _____ Prov./State _____ Code _____		
Email _____		
Driver's licence no./ N° de permis de conduire _____ Prov./State _____		
Competition licence no./N° de licence de rallye _____ CARS – Nat Reg RA/NASA – Nat Reg FIA		
<b><u>Vehicle /Véhicules</u> Class/Classe:</b>		
Open/Ouvert 4WD    Prod 4WD    Open/Overt 2WD    Prod 2WD    Gr5		
Make/Fabricant _____ Year/ Année _____		
Model/Modèle _____ Colour/Coleur _____		
Licenceplate no./N° d'immatriculation _____ Prov./State _____		
Insurance Co. Cie d'assurance _____ Policy no./N° de police _____		
<b><u>Wavier</u> ( on reverse must be signed/ <u>La renonciation</u> (au verso) doit être signee)</b>		

**Waiver/Renonciation**

\_\_\_\_\_  
Description and location of event

\_\_\_\_\_  
Date(s) of event

**RELEASE AND WAIVER OF LIABILITY AND INDEMNITY AGREEMENT**

In consideration of being permitted in the RALLY, to compete and/or to enter for any purpose any area used by the rally, including but not limited to the service areas and competition surfaces(including special stages), each of the Undersigned, for himself and his personal representatives, assigns, heirs, and next of kin, agrees, and on the direct representation that he acknowledges awareness and knowledge of the types of roads to be used in the rally and the type of terrain through which the roads run and the skill required to drive on the roads and does further warrant that his participation in the scheduled event and his entrance upon any area used for the rally, constitute an acknowledgement that he has such knowledge and awareness as foresaid and that it is safe and reasonably suited for the purpose of the event for which this Release and Waiver applies:

1. **HEREBY RELEASES, WAIVES, DISCHARGES AND COVENANTS NOT TO SUE** the Canadian Association of Rallysport, its Regions and Clubs, their officers and members, officials, marshals, car owners, drivers, service crews, participants, persons in the rally area, promoters, sponsors, advertisers, owners and lessees of premises used to conduct the event, and each of them, their officers and employees, all for the purposes herein referred to as releasees, from all liability to the undersigned, his personal representatives, assigns, heirs and next of kin, for all loss or damage, and any claim or demands therefore, on account of injury to the person or property or resulting in death to the undersigned, whether caused by the negligence of releasees or otherwise while the Undersigned is in or upon any area used for the rally, and/or competing or officiating in, working or for any purpose participating in the event;
2. **HEREBY AGREES TO INDEMNIFY AND SAVE AND HOLD HARMLESS** the Releasees and each of them from loss, liability, damage or cost they may incur due to the presence of the Undersigned in or upon any area used in the rally and whether caused by negligence of the Releasees or otherwise;
3. **I DECLARE THAT THE USE OF THE CAR HEREBY ENTERED IS COVERED BY INSURANCE** as required by the highway traffic act of the province in which the rally is run, which is valid for such parts of this event as shall take place on roads as defined in that Act;
4. **HEREBY ASSUMES FULL RESPONSIBILITY FOR AND RISK OF BODILY INJURY, DEATH OR PROPERTY DAMAGE** due to negligence of Releasees or otherwise while in or upon any area used for the rally, and/or competing or officiating in, working or for any purpose participating in the event.

Each of the Undersigned expressly agrees that the foregoing Release, Waiver and Indemnity Agreement is intended to be as broad and inclusive as is permitted by the law of the Province and that if any portion thereof is held invalid, it is agreed that the balance shall notwithstanding continue in full legal force and effect.

**THE UNDERSIGNED HAS READ AND VOLUNTARILY SIGNS THE RELEASE AND WAIVER OF ALL LIABILITY AND INDEMNITY AGREEMENT**, and further agrees that no oral representation, statements, or inducements apart from the foregoing written agreement have been made.

I have read the CARS Rally General Competition Rules, the CARS Rally Regulations and all other regulations in effect for this event and agree to abide by and be bound by such rules and regulations. I further agree to ensure that all associated crew members are similarly acquainted with these rules and regulations and agree to abide by them and be bound by them.

The entrant in signing this registration form and agreement and in consideration of the right to enter and compete in the event, agrees to participate in the event at his/her own risk. The entrant further agrees that he/she, the competitors and all associated crew members, shall execute a release agreement prior to their admission to the event.

Entrant \_\_\_\_\_  
Printed name Signature Date

Driver \_\_\_\_\_  
Printed name Signature Date

Co-Driver \_\_\_\_\_  
Printed name Signature Date

Witness \_\_\_\_\_  
Printed name Signature Date

If an entrant or competitor is under the legal age of majority, this form must be countersigned by the appropriate parent or guardian.

Parent/  
Guardian \_\_\_\_\_  
Printed name Signature Date

\_\_\_\_\_  
Address City Prov./State Postal code



## Renonciation

### Date, description de l'événement et lieu

#### FORMULAIRE DE DÉGAGEMENT DE RESPONSABILITÉ RENONCIATION À DES POURSUITES ET ACCEPTATION D'INDEMNITÉ

En échange de la permission de faire du rallye, de pénétrer pour quelque raison dans une zone interdite (c'est-à-dire un endroit où le grand public n'a pas droit d'accès, ce qui inclut sans s'y limiter les aires de service, les surfaces de compétition, y compris les épreuves de classement), chacun des soussignés pour lui-même/elle-même et leurs représentants personnels, cessionnaires, héritiers et parents, accepte, sur affirmation directe qu'il/elle reconnaît connaître et avoir conscience des types de chemins qui seront utilisés lors du rallye et du genre de topographie où passent ces chemins et le niveau d'habileté de pilotage que requièrent ces chemins et prouve par sa participation à cette épreuve et sa présence dans tout endroit utilisé aux fins du rallye, qu'il sait et a conscience de ce qui précède et qu'il est juste et raisonnable, en ce qui a trait au but de cet événement, auquel fait référence ce formulaire de renonciation, que:

1. LE SOUSSIGNÉ RENONCE À POURSUIVRE la Canadian Association of Rallysport, ses régions et leurs clubs, leurs dirigeants et les membres, organisateurs, officiels, propriétaires, pilotes, membres d'équipes de services, participants, personnes présentes dans les aires du rallye, promoteurs, commanditaires, publicitaires, locateurs et locataires des lieux où se déroule l'événement, et chacun de ce deux-là, leurs représentants et leurs employés, dans tout ce qui a rapport à l'organisation, et les dégage de toute responsabilité envers le soussigné, ses représentants personnels, cessionnaires, héritiers et parents, pour toute perte ou dommage, et toute réclamation et demande afférente, résultant de blessures physiques ou dommages matériels ou mort du soussigné, que cela ait été causé par négligence de l'organisation ou autres, pendant que le soussigné se trouve dans un lieu utilisé aux fins du rallye, qu'il soit compétiteur, officiel, travailleur ou participant d'une quelconque façon à cet événement;
2. LE SOUSSIGNÉ ACCEPTE DE GARANTIR, SAUVEGARDER ET CONSIDÉRER SANS FAUTE l'organisation, et tous et chacun de ses membres, contre toute perte, responsabilité, dommage ou coût qu'ils peuvent encourir à cause de la présence du soussigné dans tout lieu utilisé par le rallye, et qu'il ait été causé par la négligence de l'organisation ou autres;
3. LE SOUSSIGNÉ DECLARE QUE L'UTILISATION DE LA VOITURE INSCRITE À CE RALLYE EST COUVERTE PAR UNE ASSURANCE, tel que le requiert le code de la route de la province où le rallye a lieu et est valide pour les parties de l'événement qui se dérouleront sur des chemins tels que définis par ce code;
4. LE SOUSSIGNÉ ASSUME PLEINE RESPONSABILITÉ ET RISQUE DE BLESSURE, DE MORT OU DE DOMMAGE À LA PROPRIÉTÉ dus à la négligence de l'organisation ou autres lorsqu'il se trouve dans un lieu utilisé aux fins du rallye, qu'il soit compétiteur, officiel, travailleur ou participant d'une quelconque façon, à cet événement;

Chacun des soussignés accepte expressément que ce Formulaire de dégageement de responsabilité, renonciation à des poursuites et acceptation d'indemnité soit conçu dans le sens le plus large et le plus inclusif que permet la loi de la province et que, si une partie de ce formulaire est décrété invalide, les parties conviennent que le reste de ce formulaire continue d'être en vigueur.

LE SOUSSIGNÉ A LU ET SIGNE DE SON PLEIN GRÉCE FORMULAIRE DE DÉGAGEMENT DE RESPONSABILITÉ, RENONCIATION À DES POURSUITES ET ACCEPTATION D'INDEMNITÉ, et accepte par ailleurs qu'aucune représentation, déclaration ou incitation verbale n'ait été faite, hormis ce document écrit.

J'ai lu le Règlement sportif national de CARS, le Règlement national de rallye et tous les autres règlements en vigueur pour cet événement et accepte de m'y conformer. Par ailleurs, je m'engage à ce que tous les membres de mon équipe de service et les personnes qui y sont associées prennent connaissance de ces règlements et s'y conforment.

En signant le formulaire d'inscription et le présent formulaire, et en regard du droit de s'inscrire et de compétitionner dans cet événement, le propriétaire de la voiture accepte de participer à cet événement à ses propres risques. De plus, le propriétaire accepte que lui, ainsi que tous les compétiteurs et de tous les membres des équipes de service et des personnes qui y sont associées, doivent signer un formulaire de renonciation avant de pouvoir participer à l'événement.

#### Propriétaire

Nom en lettres moulées                      Signature                      Date

#### Pilote

Nom en lettres moulées                      Signature                      Date

#### Copilote

Nom en lettres moulées                      Signature                      Date

#### Témoin

Nom en lettres moulées                      Signature                      Date

Si un propriétaire ou compétiteur est d'âge mineur, ce formulaire doit être contresigné par un parent ou son tuteur.

#### Parent/ Tuteur

Nom en lettres moulées                      Signature                      Date

Adresse                      Ville                      Prov.                      Code postal



# Canadian Association of Rallysport

2012 Rally(e)

## Registration and Technical Inspection Self-Declaration Inscription et inspection technique – Déclaration sur l'honneur

*(Please complete and hand in this original form at the event registration /  
Prière de remplir ce formulaire et en remettre l'original à l'inscription.)*

### Registration/Inscription:

It is the responsibility of the Entrant/Driver to ensure the following documents are valid and on hand during the event. / Le propriétaire/pilote est responsable de s'assurer que les documents suivants sont valides et peuvent être vérifiés durant le rallye. EACH ITEM MUST BE INITIALED ONLY BY THE ENTRANT/DRIVER. / CHAQUE ARTICLE NE DOIT ÊTRE PARAPHÉ QUE PAR LE PROPRIÉTAIRE/PILOTE.

Item/Article	Valid and On Hand/Valide et vérifiable
1. Driver's Provincial Licence / Permis de conduire	_____
2. Competition & Service Vehicle Registration / Papiers des véhicules de course et de service	_____
3. Competition & Service Vehicle Insurance Certificate / Preuves d'assurance des véhicules de course et de service	_____

### Scrutineering / Inspection technique :

It is the responsibility of the Entrant/Driver to ensure that the competition vehicle is road worthy and that the following items have been checked and are operating properly. Le propriétaire/pilote est responsable de s'assurer que la voiture de rallye est en bonne condition de rouler et que les accessoires suivants ont été vérifiés et fonctionnent correctement. EACH ITEM MUST BE INITIALED ONLY BY THE ENTRANT/DRIVER. /CHAQUE ACCESSOIRE NE DOIT ÊTRE PARAPHÉ QUE PAR LE PROPRIÉTAIRE/PILOTE.

Item/Accessoire	Checked and Operational / Vérifié et fonctionnel
1. Running Lights / Phares	_____
2. Horn / Klaxon	_____
3. Wipers / Essuie-glace	_____
4. Reverse Light / Feu de marche arrière	_____
5. Brakes / Freins	_____
6. Exhaust System / Échappement	_____

### Declaration of Entrant/Driver/Déclaration du propriétaire/pilote :

The competing vehicle is a)road worthy and b)the above items are operating properly. /Le véhicule est a)en condition de rouler et b)que les accessoires susmentionnés fonctionnent correctement.

Signature \_\_\_\_\_ Driver/Pilote  Entrant/Propriétaire

Date \_\_\_\_\_ Event/Événement \_\_\_\_\_ Vehicle/Véhicule # \_\_\_\_\_